



To arrange a viewing  
please call 01908 675747



This INCREDIBLY WELL PRESENTED & MODERN FAMILY home is situated within close proximity of the Grand Union Canal, and benefits from a DOWNSTAIRS CLOAKROOM, UPDATED KITCHEN/DINER, ENSUITE to MASTER BEDROOM, plus ALLOCATED PARKING for THREE VEHICLES....

- Private Rear Garden
- Beautiful Condition
- Downstairs Cloakroom
- Ensuite to Master
- Close to Canal

In further detail, this is a beautifully presented three bedroom semi detached home, situated in a quiet location; adjacent to the grand union canal. The property's accommodation briefly comprises: Entrance hall, downstairs cloakroom, lounge, kitchen/diner, master bedroom with ensuite, two further bedrooms & family bathroom. Outside has private garden to the rear and three allocated parking spaces (carport inside the garden, one at the rear of back gates and on road outside property).

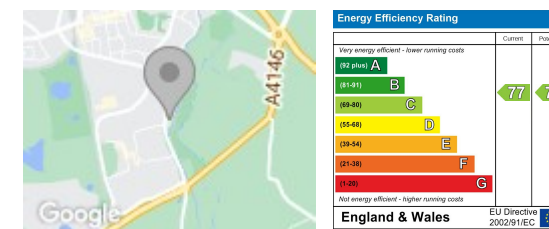
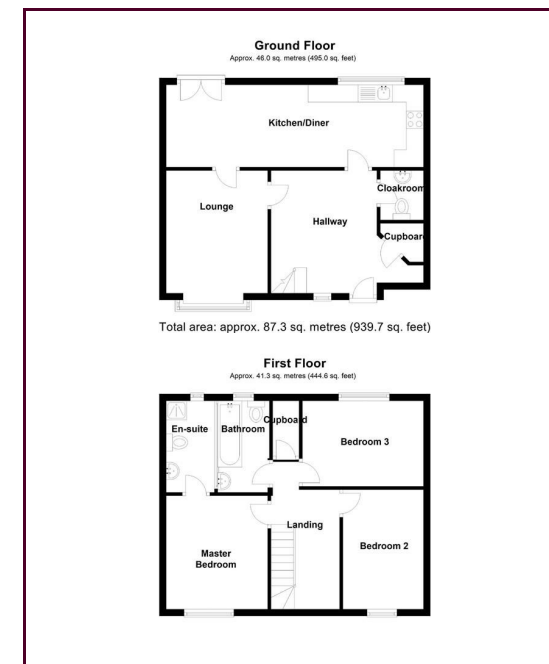
#### LOCATION: BLETCHLEY

Bletchley is an independent town lying to the south of Milton Keynes offering a wide variety of shops, mainly located on the High Street. Schools in the area include Abbays Primary School, Leon Secondary and Lord Grey Secondary School. There is also a main college and railway station in Bletchley.

This property is offered unfurnished and available beginning of November. EPC Rating: C

6 month minimum tenancy  
Council Tax Band C  
Deposit is equivalent to 5 weeks rent

- Three Allocated Parking Spaces



#### Draft Details

These details have been submitted to our clients but at the moment have not been approved by them. We therefore, cannot guarantee their accuracy and they are distributed on this basis. Please ensure you have a copy of our approved details before committing yourself to any expense.

Whilst we endeavour to make our sales details accurate and reliable, if there is any point which is of particular importance to you, please contact the office and we shall be pleased to check any information for you. Do so, especially if travelling any distance to view the property.

The mention of any appliances and/or services within these details does not imply they are in full and efficient working order.

Any plans included within these details are a GUIDE TO THE LAYOUT OF THE PROPERTY ONLY and are NOT DRAWN TO SCALE. Dimensions are approximate.

#### Mortgage Information

We can offer independent mortgage advice. Please call us to discuss your requirements. Your home may be repossessed if you do not keep up repayment on your mortgage or any loans secured on it.

#### Property Valuations

We have some of the most experienced property valuers in Milton Keynes and would welcome the opportunity to carry out a VALUATION and MARKET APPRAISAL of your home.

#### Viewing Arrangements

Please call us to make an appointment to view this property.

Monday to Friday 9.00 am - 6.00 pm  
Saturday 9.00 am - 4.00 pm  
Sunday CLOSED

